



reismakina

**DURAKİLİT**

**Yale®**

**KİLİT ÇEŞİTLERİ**

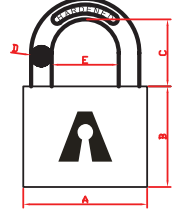




## PİRİNÇ ASMA KİLİT



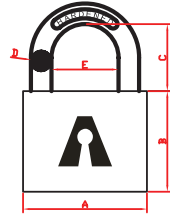
KOD	A (mm)	B (mm)	C (mm)	D (mm)	E (mm)
DK-2620	20	19.5	11.1	3.3	10.7
DK-2625	25	24.0	13.8	4.3	12.7
DK-2630	30	27.0	16.1	5.0	15.0
DK-2670	70	51.0	37.1	11.0	37.0



## GRİ BOYALI ASMA KİLİT



KOD	A (mm)	B (mm)	C (mm)	D (mm)	E (mm)
DK-3625	25	24.5	13.8	4.3	12.7

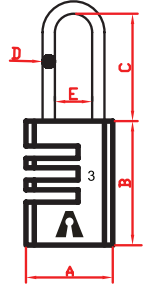


## ŞİFRELİ ASMA KİLİT

Üç Haneli



KOD	A (mm)	B (mm)	C (mm)	D (mm)	E (mm)
DK-110	21	30.0	22.5	3.0	9.0

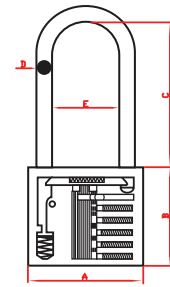


## PİRİNÇ ASMA KİLİT

Uzun Kanca



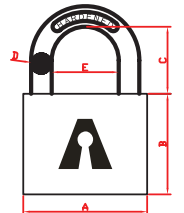
KOD	A (mm)	B (mm)	C (mm)	D (mm)	E (mm)
DK-2650L	50.0	41	61.0	8.0	26.0



## PİRİNÇ KAPLAMA ASMA KİLİT



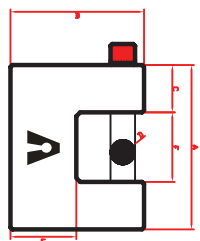
KOD	A (mm)	B (mm)	C (mm)	D (mm)	E (mm)
DK-4625	25	24.0	13.8	4.3	12.7



## YANDAN AÇMA ASMA KİLİT



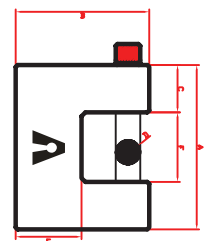
KOD	A (mm)	B (mm)	C (mm)	D (mm)	E (mm)	F (mm)
DK-6195	95	69.0	18.8	12.0	69.0	41.0



## YANDAN AÇMA KROM ASMA KİLİT



KOD	A (mm)	B (mm)	C (mm)	D (mm)	E (mm)	F (mm)
DK-6380	80	61.0	17.0	11.80	25.0	28.0







### PENCERE KİLİDİ



KOD	RENK	
V304	BEYAZ	

### PENCERE KİLİDİ



KOD	RENK	
V304B	KAHVE	

### PENCERE KİLİDİ



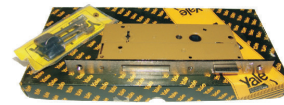
KOD	RENK	
V302	BEYAZ	

### EMNİYET KİLİDİ



KOD	ÖZELLİK	
2513.40	Dört Turlu, Barelsiz	

### EMNİYET KİLİDİ



KOD	ÖZELLİK	
311.45	45mm, İki Turlu	

### YILDIZ ANAHTARLI GÖMME KİLİT



KOD	ÖZELLİK	
2563.40	40mm, Dört Turlu	

### YILDIZ ANAHTARLI GÖMME KİLİT



KOD	ÖZELLİK	
563.35	35mm, İki Turlu	
560.40	40mm, İki Turlu	